



**SOIL & WATER**  
CONSERVATION DISTRICTS

**FORESTRY COMMITTEE**

# FORESTRY COMMITTEE REPORT

PRESENTED BY DALE SHUMAKER

---



[www.centuryschool100.com](http://www.centuryschool100.com)

**Century Jr/Sr High School**  
**4721 Shawnee College Road**  
**Ullin, IL 62992**  
**618.845.3518**



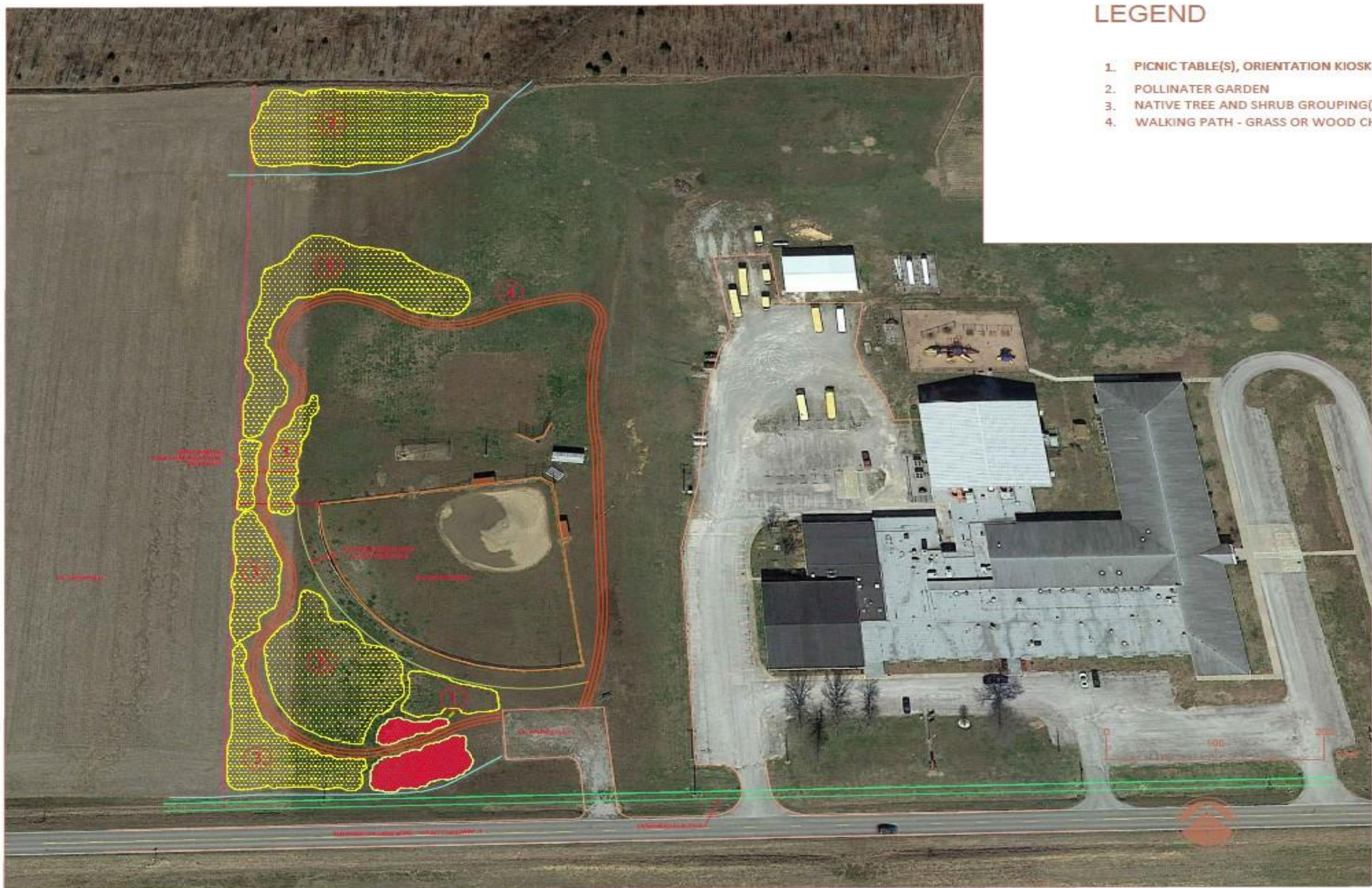
# *Welcome* to the **Century School Outdoor Classroom**

This outdoor classroom is an educational space that brings learning to life by bringing learning outside. It is a gathering place for teachers and students and provides an opportunity to integrate nature onto the school grounds. All subjects or curriculum related to Illinois' forests can be presented in this outdoor classroom and it can be utilized in every season. To undertake a project of this magnitude it takes strong, dedicated partners and a source of funding. The organizations and businesses listed below have enthusiastically joined together to support this education project. Without these partners this project would not have been possible:

**Association of Illinois Soil and Water Conservation Districts Forestry Committee**  
**Century Community School**  
**Illinois Forestry Development Council**  
**Shawnee Resource Conservation and Development Council**  
**Pulaski-Alexander County Soil and Water Conservation District**  
**U.S. Forest Service**  
**Illinois Department of Natural Resources**  
**University of Illinois Extension**  
**Conservation Technologies**  
**Natural Resource Conservation Service**  
**Pulaski-Alexander County Farm Bureau**  
**Farm Credit Services**  
**River to River Cooperative Weed Management Area**  
**The Nature Conservancy**  
**Century School Ag and Biology Students**  
**Southern Illinois Electric Cooperative**  
**Farrell Lumber Company**  
**Community Volunteers**

*Thanks to Everyone That Made this Project Possible*





## LEGEND

1. PICNIC TABLE(S), ORIENTATION KIOSK
2. POLLINATER GARDEN
3. NATIVE TREE AND SHRUB GROUPING(S)
4. WALKING PATH - GRASS OR WOOD CHIPS

PROPOSED OUTDOOR LABORATORY - CONCEPT PLAN  
**CENTURY SCHOOL**

# THANKS, JENNY!!



# THANKS, BRIAN!!



# THANKS, DAVE!



# TREE PLANTING





# TREE PLANTING



# TRAIL BUILDING



# POLLINATOR PLANTING



# PAVILION CONSTRUCTION





# Invasive Plant Species in Southern Illinois



**Bush Honeysuckle**



**Stilt Grass**



**Chaff Flower**



**Garlic Mustard**



**Autumn Olive**



**Bradford Pear**

# The Southern Illinois Oak Forest

## *An Ecosystem in Trouble*



In the 1930's, efforts to control fire became widespread and successful. Since that time, relatively fast-growing, shade-tolerant species such as American beech and sugar maple have increased their dominance in the forest. As a result the canopy has closed, shading the forest floor and suppressing the regeneration of new oak trees as well as the growth of sun-loving wildflowers and grasses.

As the older oaks begin to die, there are too few young oaks in the understory to replace them. Additionally, many of the forest wildflower species have virtually disappeared from the shady forest floor. As oaks and wildflowers disappear, the wildlife that depends on these plants for food and shelter will suffer.



Researchers at Southern Illinois University have predicted that our oak forests may convert to predominantly beech-maple forests by 2050 if efforts are not made to manage for oak regeneration.

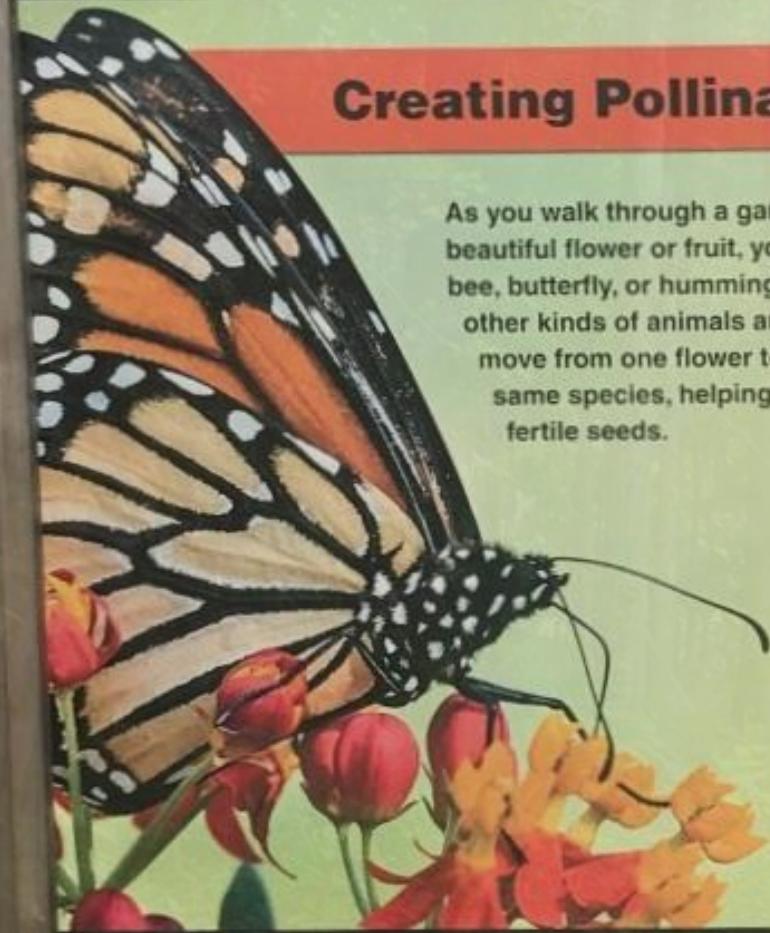
Photos by Michael Bates



Special thanks to the U.S. Forest Service for supporting efforts to restore the Southern Illinois Forest.



## Creating Pollinator & Native Plant Gardens



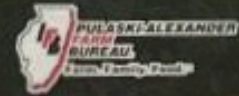
As you walk through a garden to enjoy a beautiful flower or fruit, you might thank a bee, butterfly, or hummingbird. These and other kinds of animals are pollinators – they move from one flower to another of the same species, helping plants to produce fertile seeds.

Eighty percent of the world's crop species and most native plants rely on animals for pollination.

However, biologists fear several butterfly and bumblebee species have disappeared from parts of their range because of habitat loss, introduced diseases, pollution, and pesticide.

### How can you help pollinators?

- Grow native plants in your garden.
- Plant a variety of flowering species.
- Avoid using pesticides or herbicides.
- Provide sunny, bare soil areas for ground-nesting bees.



Learn more at [WatchUsGrow.org](http://WatchUsGrow.org)

## Swamp White Oak

**Quercus bicolor** The Swamp White Oak is a large, spreading tree that grows up to 100 feet tall. It has a thick, light-colored bark and a dense, rounded crown. The leaves are alternate, ovate, and have a serrated margin. The fruit is a cupule that is often covered in persistent bracts.



## Cherrybark Oak

**Quercus Pagoda** Cherrybark trees are common in the Carolinas and in the lower Mississippi Valley but rare in Georgia and Florida in between. There are also scattered, outlying populations as far north as New Jersey and as far west as Texas and Oklahoma. The name 'cherrybark' comes from its similarity to the bark of a black cherry. Flowers appear on the trees from February to May.



## Shellbark Hickory

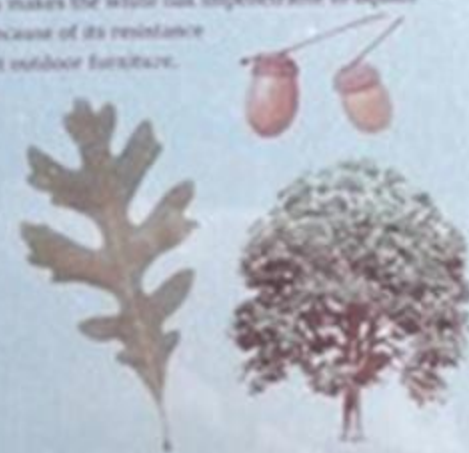
**Carya laciniosa** The Shellbark Hickory is a slow-growing, long-lived tree, hard to transplant because of its long taproot, and subject to insect damage. The nuts, largest of all hickory nuts, are sweet and edible. Wildlife and people harvest most of them; those remaining produce seedling trees readily. The wood is hard, heavy, strong, and very flexible, making it a favored wood for tool handles. A specimen tree has been reported in Missouri with 117 cm (46 in) diameter at breast height, 36.9 m (121 ft 1 in) tall, and a spread of 22.6 m (74 ft 2 in).



## White Oak

**Quercus alba** A large, stately tree that grows up to over 100 feet tall, and 38 to 50 inches in diameter, with a round to wide spreading irregular crown. White oak bark is whitish or light gray.

White oak is almost impervious to water. The pores of the heartwood of white oaks are typically plugged with tyloses, which is a membranous growth. Tyloses makes the white oak impenetrable to liquids and particularly suited for use in the boat industry. Because of its resistance to moisture, white oak is also widely used to construct outdoor furniture. White oak is fairly straight-grained and is a favorite material used in many types of fine furniture.



## Persimmon

**Diospyros kaki** Like the tomato, persimmons are not commonly considered to be berries, but morphologically the fruit is in fact a berry. Persimmon fruit matures late in the fall and can stay on the tree until winter. In color, the ripe fruit of the cultivated strains range from glossy light yellow-orange to dark red-orange depending on the species and variety.





# CENTURY OPEN HOUSE 2021



# 4-H GREEN COMMUNITIES

## TREE PLANTING PROJECT 2022



# Participating Districts



## **Forestry Committee Responsibilities:**

- Survey districts seeking participants,
- Select species
- Locate and order trees from nursery
- Receive, sort and reload trees at a central distribution site,
- Distribute to local distribution sites. (2022 : Ogle, Peoria, Henry, St. Clair, Franklin and Pulaski/Alexander)

## **Extension Responsibilities:**

- Survey statewide Extension Units to seek participants,
- Coordinate a fund-raising campaign with 4-H alumni to raise \$5k,
- Establish an education and marketing plan, and
- Plant trees in participating districts with 4-Hers' and 4-H alumni and staff.

## **SWCD Responsibilities:**

- Select suitable planting locations in their districts
- Receive the trees and take care of them until 4-H planting day





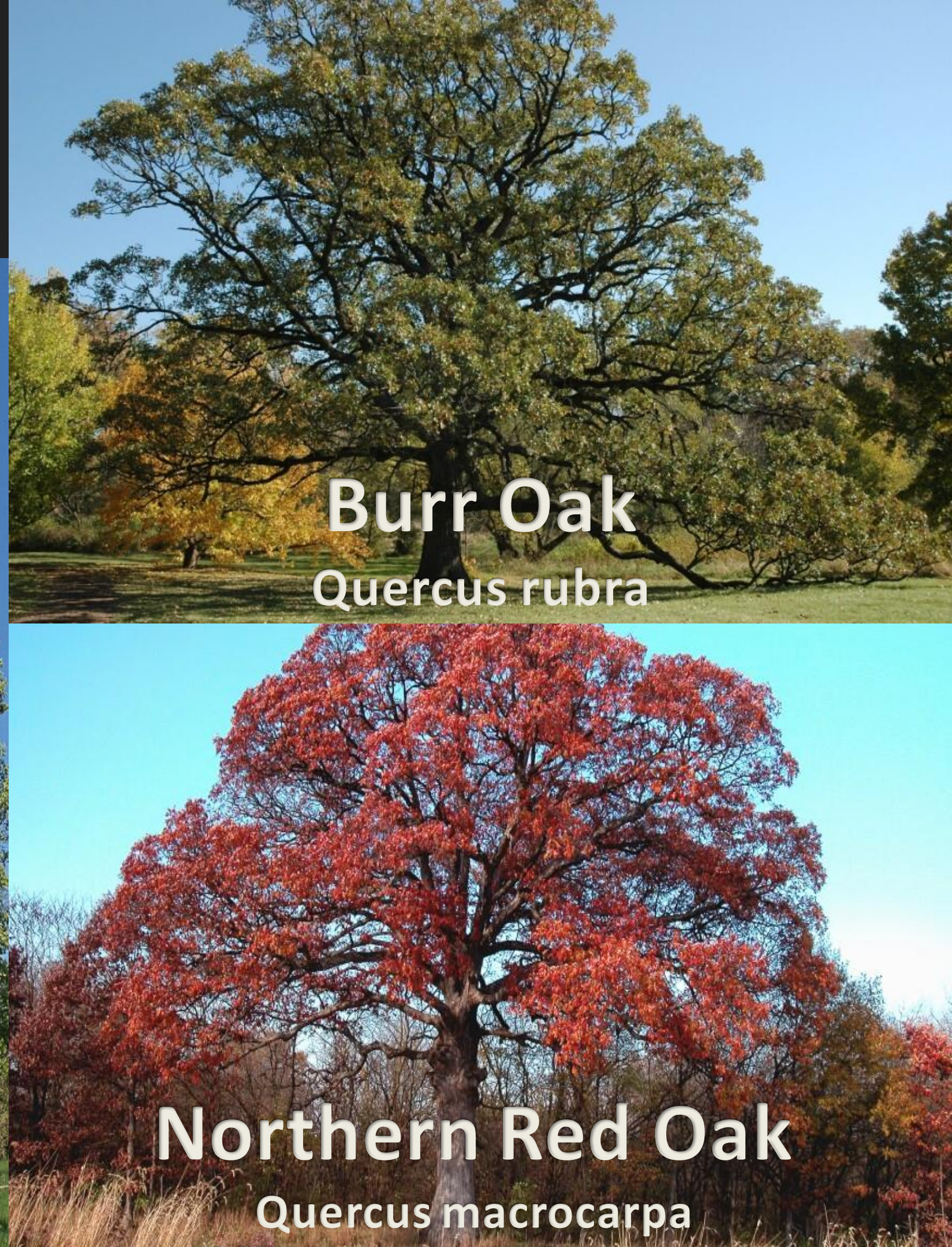
88 Forrest Keeling Ln, Elsberry, MO 63343  
(573) 898-5571  
[www.fknursery.com](http://www.fknursery.com)



**Black Oak**  
*Quercus velutina*



**Jackiana Oak**  
*Quercus jackiana*



**Northern Red Oak**  
*Quercus macrocarpa*



**Burr Oak**  
*Quercus rubra*



# FROM THE NORTH



# TO THE SOUTH





# FROM THE EAST



# TO THE WEST



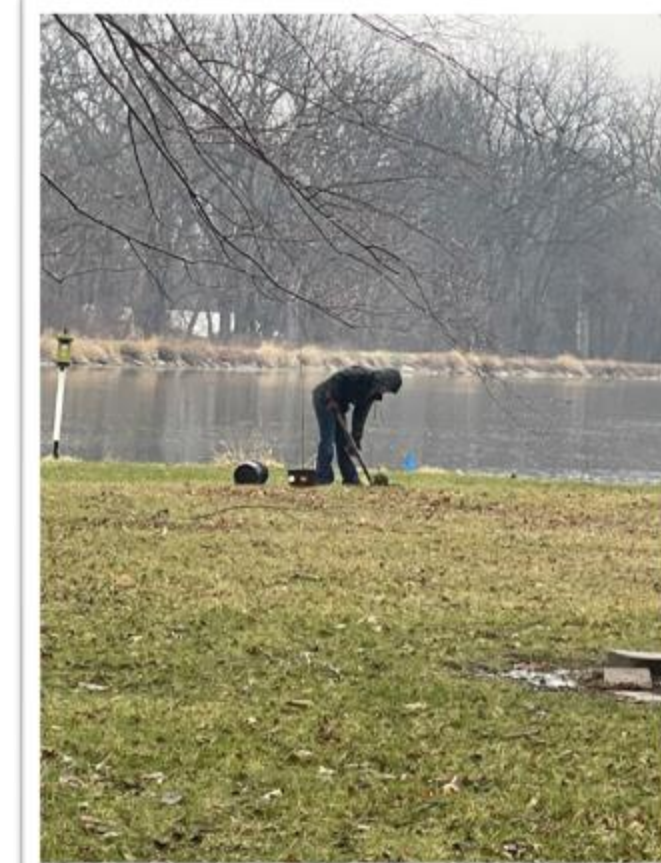
# AND EVERYWHERE IN BETWEEN



# AND EVERYWHERE IN BETWEEN



# AND EVERYWHERE IN BETWEEN



# AND EVERYWHERE IN BETWEEN



# AND EVERYWHERE IN BETWEEN



# AND EVERYWHERE IN BETWEEN



# AND EVERYWHERE IN BETWEEN



# TREE PLANTING PROJECT BY THE NUMBERS

- 3 - Funding Partners, IFDC, Extension Foundation, AISWCD
- 25 - Trees planted per District
- 30 - Volunteer hours to plan
- 31 - Participating Districts
- 80 - Volunteer hours to unload, sort, reload and distribute trees
- 248 - Adult volunteers for planting
- 327 - 4-H and Student volunteers for planting
- 418 - Miles between northern most and southern most planting site
- 775 - Total trees planted
  
- \$11, 998 - Total cost of the project





THIS CERTIFICATE RECOGNIZES

**MASSAC COUNTY**

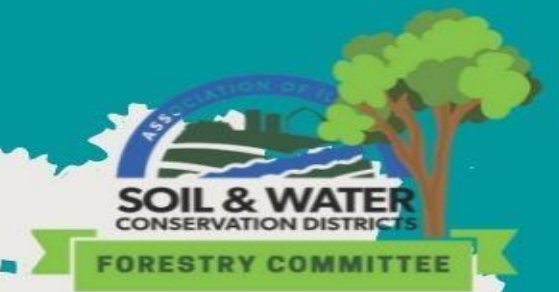
AS THE

*Early Bird District*



by the AISWCD Forestry Committee

*on this 17th day of July, Two Thousand and Twenty Two*



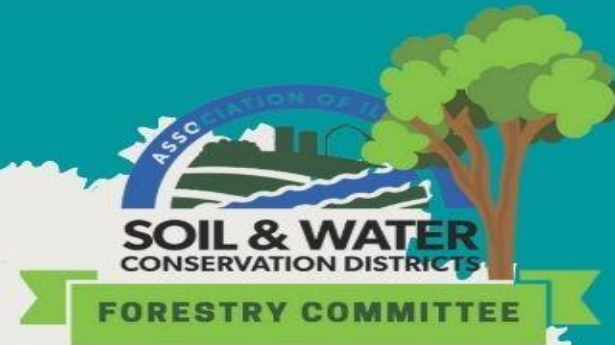
THIS CERTIFICATE RECOGNIZES  
**WINNEBAGO COUNTY**

AS THE RECIPIENT OF THE  
*Perseverance Award*



by the AISWCD Forestry Committee  
on this 17th day of July, Two Thousand and Twenty Two

THIS CERTIFICATE RECOGNIZES  
**JOSHUA CURRY**  
OF HENRY COUNTY  
AS THE M.V.P.



*Most Valuable Planter*



by the AISWCD Forestry Committee  
*on this 17th day of July, Two Thousand and Twenty Two*

THIS CERTIFICATE RECOGNIZES  
**WILLIAMSON COUNTY**  
FOR SUBMITTING THE



*Cutest Picture*

by the AISWCD Forestry Committee  
on this 17th day of July, Two Thousand and Twenty Two

# ANY QUESTIONS?

618-534-3864  
gds\_1953@hotmail.com

