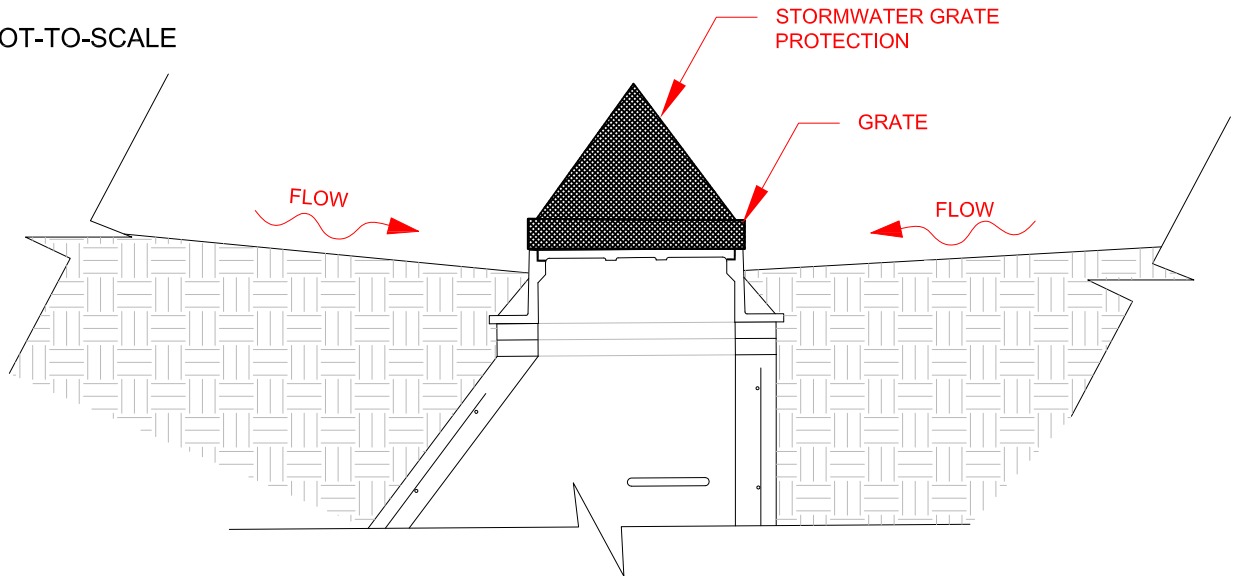
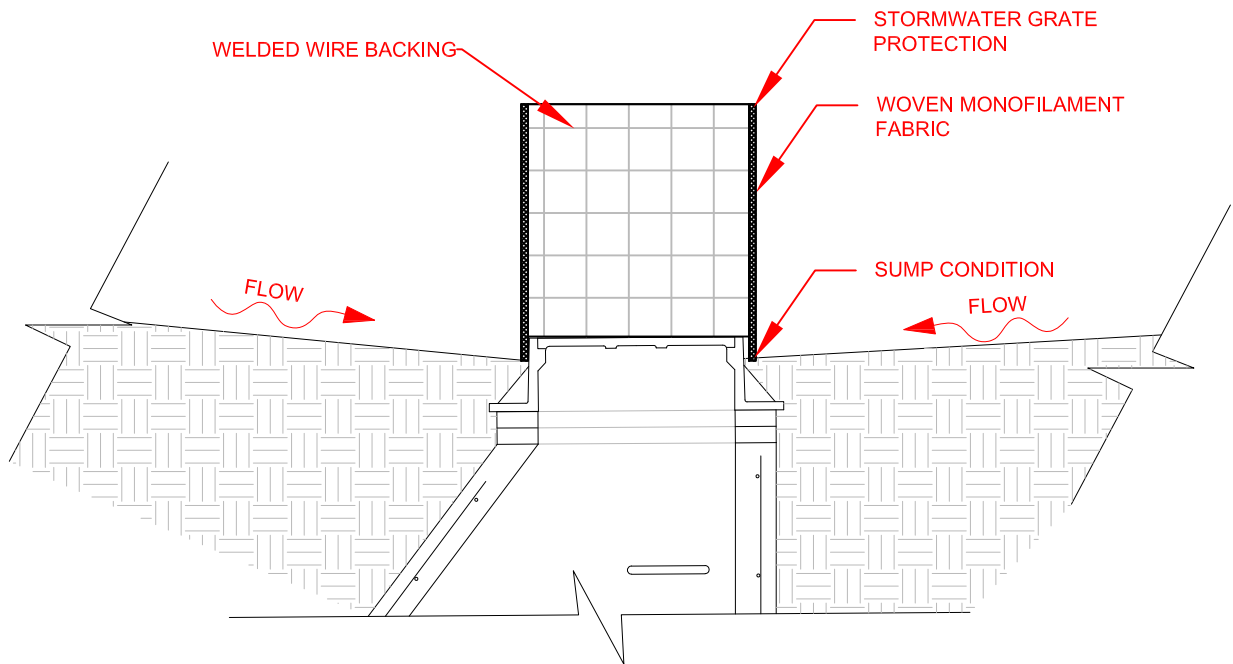


MANUFACTURED ABOVE GRADE INLET PROTECTION

NOT-TO-SCALE



SECTION



SECTION

NOTES:

1. A maintenance schedule must maintain a sediment accumulation of less than 50% of the height of the inlet protection.
2. Device should be supported.
3. Fabric type should be IUM 592 Standard Table 1 Class 4

REFERENCE

Project _____
Designed _____ Date _____
Checked _____ Date _____
Approved _____ Date _____

STANDARD DWG. NO.

IUM-531

SHEET 1 OF 1

DATE 03-27-17