

North Cook County SWCD

PO Box 407, 899 Jay Street - Elgin, IL 60120

Phone: 847/468-0071 Fax: 847/608-8302

Website: www.northcookswcd.org

Contacts: Tonya Canania and Rick McAndless

North Cook County SWCD - O'Hare Modernization Project

North Cook Co. SWCD is one of three districts in the northeast region of the state that has a Cooperative Agreement with the U.S. Army Corps of Engineers- Chicago District to perform soil erosion & sediment control (SE/SC) plan review and site inspections for specific USACOE permitted projects.

The Phase I Modernization Project for O'Hare Airport is undoubtedly the most challenging project that we have been involved with in the eleven year history of our Corps partnership. Because this project was unique on many levels, the standard SE/SC application process & protocols used for most projects were not applicable. The North Cook and Kane-DuPage SWCDs started negotiations with the City of Chicago, O'Hare Modernization Project (OMP) representatives in late summer of 2004 to develop an individual application process for the Phase I Project. The Kane-DuPage SWCD is heavily involved with the project as well, since the southwest corner of the airport stretches into Du Page County. Eventually, a separate reimbursement structure, inspection protocol, and soil erosion & sediment control review process were developed. The OMP received approval of an overall Phase I SE/SC Plan to satisfy Army Corps permit requirements, but are required to submit each individual project (Task Order) to the SWCD for a separate review and sign-off as they are developed. At North Cook, we have reviewed twenty-two separate Task Orders under Phase I. Due to the size and intense nature of the project development, the active project sites are inspected weekly. We began project inspections in December of 2005. Each District works closely with an individual hired by OMP to oversee and coordinate SE/SC inspections and plan reviews. The largest project that we have worked on to date is the construction of a new runway (9L -27R) which will be completed in late September.

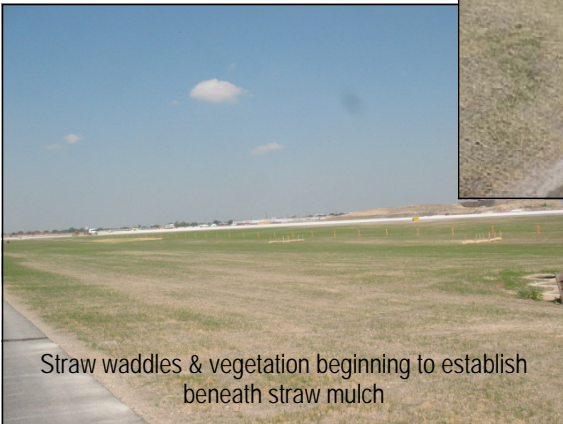
Overview photo of O'Hare Modernization Project



Hydro Mulch being applied to the site



Straw waddles & vegetation beginning to establish beneath straw mulch



One of the many sites where erosion control blankets are installed on a side slope

